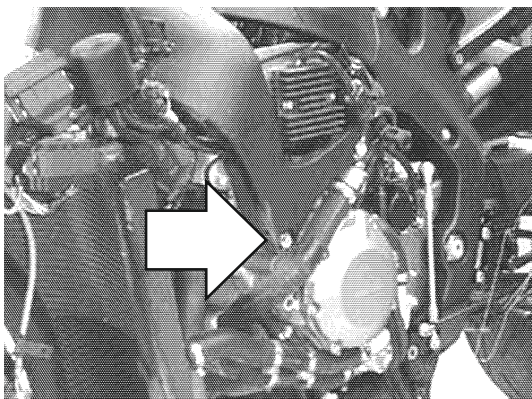


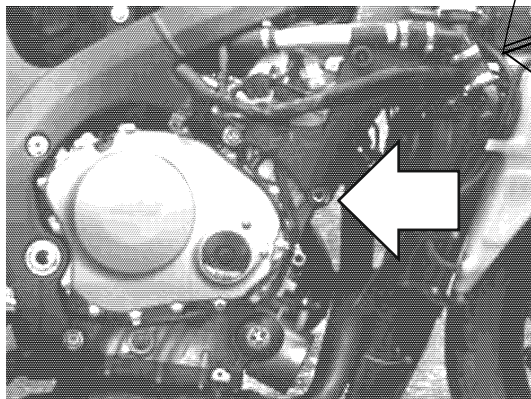
# HONDA CBR 1000 RR

year of production: '04-'07

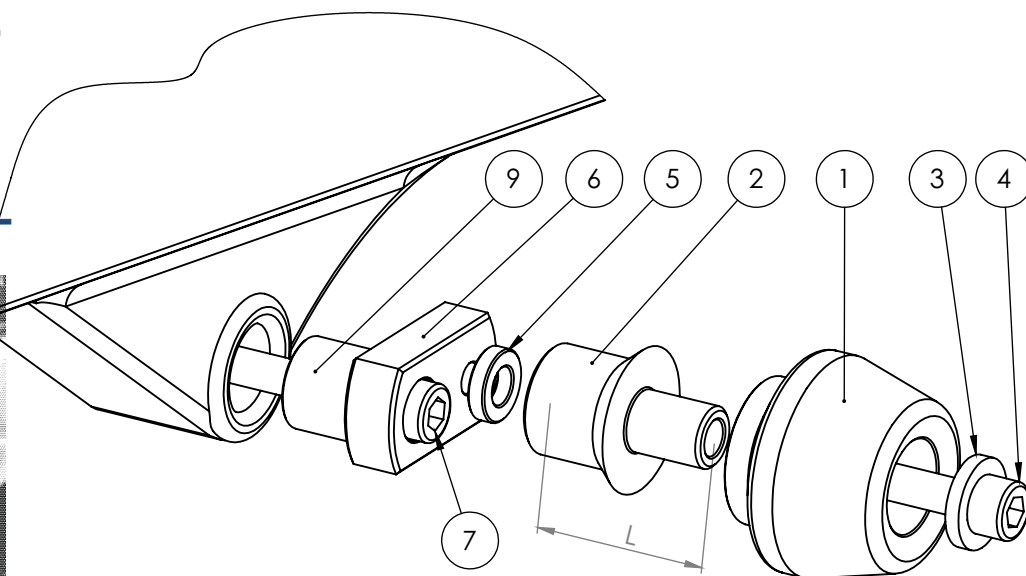
product code: T10108



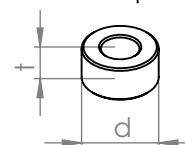
Assembly position (left side)



Assembly position (right side)



Dimensions of the spacers



Assembly scheme.

## Assembly instructions

1. Remove the fairings on both sides.
2. Please check the assembly positions on the image above. Remove the original bolts indicated with the arrow on the image above.
3. Replace the original bolts with the new mounting bolts (parts #7), spacers (parts #9) and metal adapters (parts #6) and put these parts in the right order shown on the assembly scheme on the right page. Put the adapters (parts #6) in the right positions according to the assembly scheme.
4. Mark the positions of the holes on the fairings. The correct positions are opposite to the threaded holes in the adapters (parts #6).
5. Drill the holes in the fairings. We suggest to drill small holes first (eg. 0,20" in diameter). Then check if the holes are in correct positions by putting the fairings on. If the positions of the holes are correct, drill the final holes. Final holes should be ca. 1,3" in diameter.
6. Please assemble the fairings.
7. Assemble the sliders, round cylindrical body, the bolts, steel sleeve and the spacers (parts #1, #2, #3, #4 and #5) according to the drawing on the right page. Put them into the threaded holes in the adapter (part #6).

We suggest to use the threadlocker (eg. Loctite) to make sure that the vibrations of the engine do not loosen the bolts.

Part #	Part name	Left side (as You sit on the motorbike)	Right side
1	Slider	1 pcs.	1 pcs.
2	Round cylindrical body	40 mm	40 mm
3	Steel sleeve	1 pcs.	1 pcs.
4	Allen bolt (8,8 class)	M10x55 mm	M10x55mm
5	Spacer	-	-
6	Adapter	Aluminium	Aluminium
7	Mounting bolt 1	M12x1,25x80 (Hex)	M10x1,25x90 (Hex)
8	Mounting bolt 2	-	-
9	Spacer 1	t=20mm, d=15 mm	T=20mm, d=15mm
10	Spacer 2	-	-
11	Nut	-	-
12	Washer	-	-

### SMALL PRINT NOTE.

EACH CRASH IS DIFFERENT. THIS IS JUST PURE PHYSICS. IF 200 KILOGRAMS HIT THE CONCRET, SOMETHING BAD USUALLY HAPPENS. ALTHOUGH RENNER KEEPS HIGH ENGINEERING STANDARDS, WE CANNOT TAKE RESPONSIBILITY FOR DAMAGES OCCURED DESPITE OF USING OUR PROTECTIVE ACCESSOIRES. THIS PRODUCT IS ENTIRELY PRODUCED IN EUROPE. THIS PRODUCT IS A PROFESSIONAL ACESORY TO BE USED ON THE RACE TRACK.